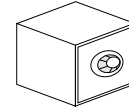
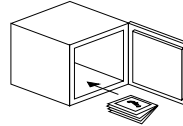


Important: Retain these instructions



INSTALLATION ON PC

1 Check PC Configuration



>=

Pentium II 200 MHz, 64 Mb RAM, 1 Gb hard disk, CD-ROM drive, Graphics Card with 2 Mb of RAM capable of 1024 X 768 (256 colours), 17" monitor, keyboard, mouse, 1 serial port, 1 parallel port, and Microsoft Windows 95®/98®.

2 Install the software

a Insert CD



b Follow the instructions on the screen.

If autorun is disabled, run 'setup.exe' from the root of the CD.

3 Run 915

a Choose 'Start\Programs\Trend 915MDS'.

4 Obtain a Licence

a Choose 'Help>Register Licence'.



b Enter the 'serial number'.



c Click on 'Request'.



d Enter all the details.



e Click on 'OK'.



f Load 'Licence.txt' located in directory in which the 915MDS is installed into Notepad, and print it out.



g Fax the printout to the 'Trend Customer Services Department on +44 (0) 1403 217392.

If you are entitled to a Type 1 licence, you should also contact your account manager to obtain another unlock code which will allow access to the additional features. This licence will be time limited, once it expires you can either obtain another from your account manager, or use the original (Type 1) licence to continue using 915 without the additional features.

5 Enter the Unlock Code

a Run 915.



b Choose 'Help>Register Licence'.



c Enter the 'Unlock code'.

d Click on 'Unlock'.

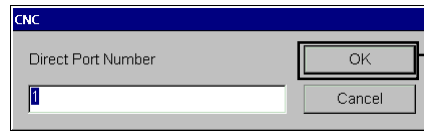
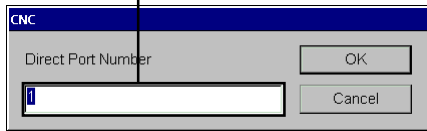
INSTALLATION ON PC (Continued)

6 Specify the Comms Port

a Choose '*Parameters>Direct>Port*'.



b Enter the required port number.



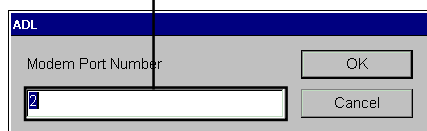
c Click.

7 Specify Local Modem Port

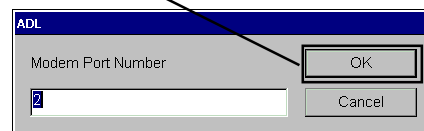
a Choose '*Parameters>Local Modem>Port*'.



b Enter the required port number.



c Click.

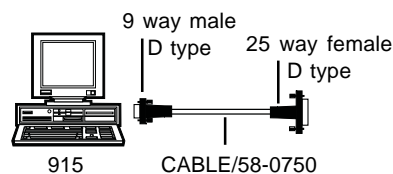
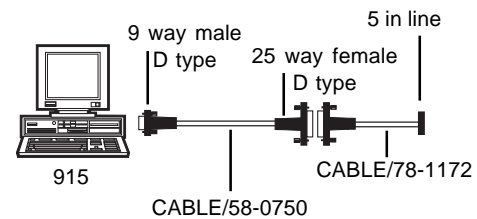
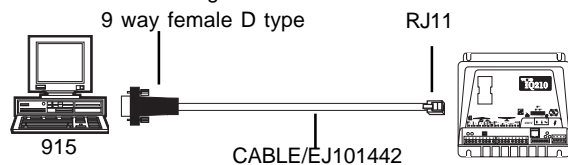


8 Connect to Trend Network

This section contains some examples of how the 915 should be connected to the Trend Network. For full details of connecting the 915 to Trend devices, and the Trend Network see the 915 Manual.

Connection to node controllers/controllers:

Connect the comm port being used by the 915 to the controller's 'Local Supervisor' port using the appropriate cables, as shown in the diagrams below.



Connection over Ethernet Network

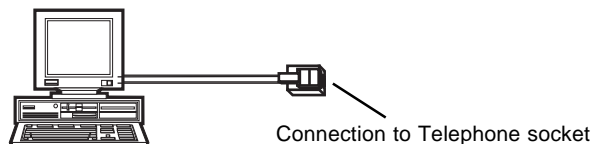
If required, connection can be made to the Trend network over Ethernet to an EINC. For details of how to do this see the 915 Manual (TE200330).

Connection using a GSM phone

If required, connection can be made to the Trend network using a GSM phone. For details of how to do this see the 915 Manual (TE200330).

Connection to TMN/ADL using the on board modem:

Connect the telephone socket of the device running 915 as described the instructions provided with the CE Device.



Manufactured for and on behalf of the Environmental and Combustion Controls Division of Honeywell Technologies Sàrl, Ecublens, Route du Bois 37,Switzerland by its Authorized Representative, Trend Control Systems Limited.

Trend Control Systems Limited reserves the right to revise this publication from time to time and make changes to the content hereof without obligation to notify any person of such revisions or changes.

Trend Control Systems Limited

P.O. Box 34, Horsham, West Sussex, RH12 2YF, UK. Tel:+44 (0)1403 211888 Fax:+44 (0)1403 241608 www.trend-controls.com

Trend Control Systems USA

6670 185th Avenue NE, Redmond, Washington 98052, USA. Tel: (425)869-8400, Fax: (425)869-8445 www.trend-controls.com