

3 Installation (continued)

2 Requirements (continued)

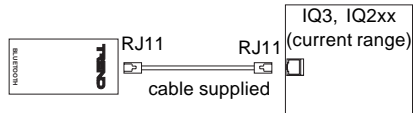
d
Microwaves ovens may interfere with signal. Signal will be affected by metal, water, and concrete.

e  restricted use in FR, IT, NL

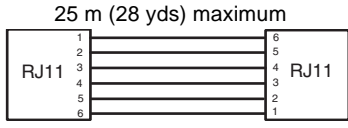
f This radio has been prequalified and is listed in the Bluetooth Qualified Products as B03005. Flexipanel Ltd is registered as an Adopter Member with the Bluetooth SIG. Inc.

3 Connect Bluetooth Supervisor Port Adaptor (BSPA) to Controller

Local supervisor port RJ11 carries signal and power for: All IQ3s, IQ204, later IQ21x, later IQ22x, IQ23x, later IQ241/242, IQ246



If required a cable can be made to the required length, wired as shown



The local supervisor port of certain controllers doesn't supply 24 Vdc power, so an adaptor cable must be used in addition to the cable supplied. The controllers involved and use of the cable is described in the table and diagrams below:

Controller	Supervisor connector	Sufficient power	Adaptor cable
IQ7x, IQ9x, IQ9xe, IQ10x, early IQ1xx+	5-pin	No	SDU/RD ADAPTOR IQ1XX+
IQ11x, IQ13x, IQ15x, CNC2	25-way D-type	No	SDU/RD ADAPTOR IQ1XX
IQ8xe, later IQ1xx+, IQ25x	RJ11	No	SDU/RD ADAPTOR IQ2XX
IQ204, IQ23x, IQ246,	RJ11	Yes	not required
*IQ21x prior to 1/6/01, IQ22x prior to 12/8/98, IQ241/IQ242 prior to 16/1/98	RJ11	No	SDU/RD ADAPTOR IQ2XX
*IQ21x after 1/6/01, IQ22x after 12/8/98, IQ241/IQ242 after 16/1/98	RJ11	Yes	not required
IQ22x/ADL	25-way D-type	No	ADAPTOR BLUETOOTH-IQ22X/ADL
IQ3	RJ11	Yes	not required

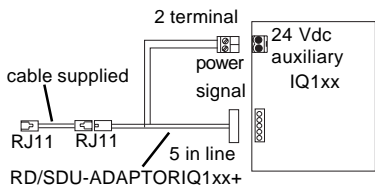
***Note:**
IQ21x, 22x, 241/242 with 8 or 15 character serial numbers all require an adaptor. Those with 16 character serial numbers require analysis of the date code in the number in order to decide if an adaptor is required:

16 character codes were used after 1/6/97 and have the year and month coded into the 10th to 12th characters (10th character - last digit of year, 11th and 12th characters - month), e.g.
 16/1/98: **IQ*****801******
 12/8/98: **IQ*****808******
 1/6/01: **IQ*****106******

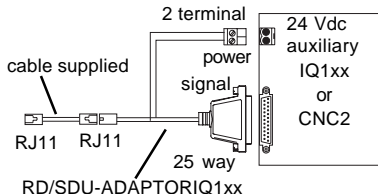
3 Installation (continued)

3 Connect Bluetooth Supervisor Port Adaptor (BSPA) to Controller
(continued)

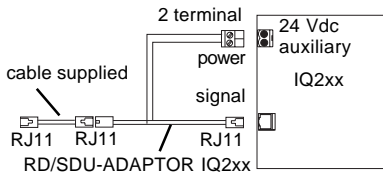
For early IQ1xx with a 5 in line RS232 connector the additional adaptor RD/SDU-ADAPTORIQ1xx+ can be used



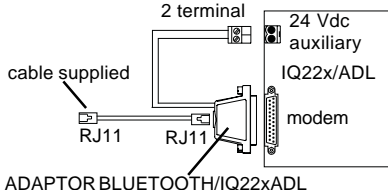
For CNC2 or early IQ1xx with a 25 way RS232 connector the additional adaptor RD/SDU-ADAPTOR IQ1xx can be used



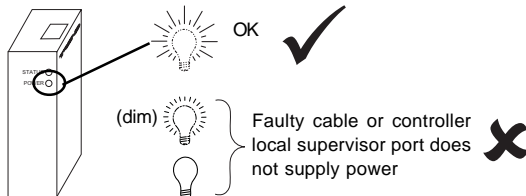
For later IQ1xx, early IQ21x, early IQ22x, and IQ250/251 the additional adaptor RD/SDU-ADAPTOR IQ2xx can be used



For IQ22x/ADL remove the modem and plug in the additional adaptor: ADAPTOR BLUETOOTH/IQ22xADL.



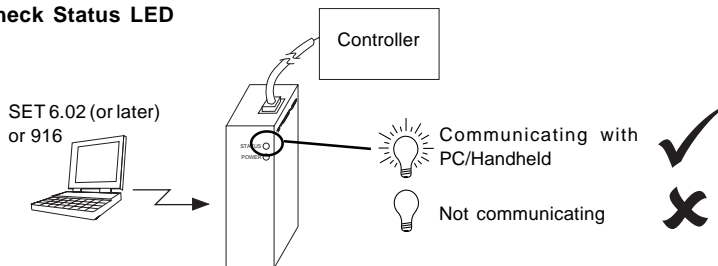
4 Check Power LED



5 Configure Handheld or PC Bluetooth Driver

For Handheld see section 4, For PC see section 5

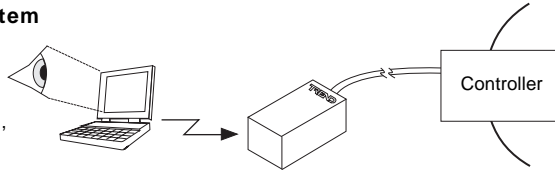
6 Check Status LED



3 Installation (continued)

7 Test System

e.g. monitor, control, download strategy



Note that if controller supervisor port address (in address module) is set to zero, the software will only be able to communicate with the single controller whereas if the supervisor port address is set non-zero it will be able to communicate with any controllers connected to the network by using the local controller's supervisor CNC.

4 Configuring Handheld Bluetooth Driver and 916

This shows a typical installation; dialogue box details may vary with the particular version of software used

1 Select Trend Bluetooth Supervisor Port Adaptor

- a Click 'Start', 'Bluetooth Manager'. Then select 'New', 'Connect'. Select 'Explore a Bluetooth device' and click 'Next'
- b Tap where it says '<No device selected> Tap here to choose a device'.
- c The Bluetooth Browser will be displayed including a device called 'TREND Bluetooth xxxx'. Where xxxx matches the 4-digit serial number on the rear of the module. Click the icon.

2 Enter Password

- a The 'Bluetooth Authentication' Dialog will be displayed.
- b Enter 9999 in 'Passkey' and click 'OK'
- c Click 'Cancel'

3 Configure 916 Serial Port and Baud Rate

- a Start 916.
- b Click 'Functions', 'Direct Connect'.
- c Select the correct serial port for the Bluetooth serial port on the handheld (often 8 for iPAQs). This should be covered in the documentation supplied with the handheld
- d Ensure that 'Speed' is set to 9600. Click 'OK'.

4 Select Trend Bluetooth Supervisor Port Adaptor

- a The 'Bluetooth Browser' will be displayed. Click on the icon adjacent to 'TREND Bluetooth xxxx'.
- b The connection is made and 916 will function in the same way as with any other connection.

5 Configuring PC Bluetooth Driver

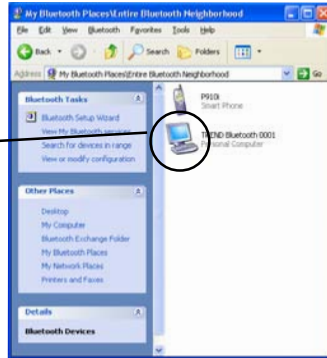
5.1 On Windows XP

1 Install PC Bluetooth Adaptor

- a Install the PC's Bluetooth adaptor in accordance with its supplier's instructions.
- b Ensure that 'Bluetooth Serial Port' is included in the list of services that the PC will provide.

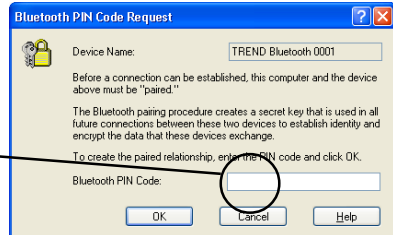
2 Select Trend Bluetooth Supervisor Port Adaptor

- a Browse to 'My Bluetooth Places' and click 'View devices in range' in the left margin twice (1st click takes you to 'My Bluetooth Places\Entire Bluetooth Neighborhood').
- b A desktop computer called 'TREND Bluetooth xxxx' will be shown in the browser. Where xxxx matches the 4 digit serial number on the outside of the module.
- c Right-click on 'TREND Bluetooth xxxx' icon and select 'Pair Device'



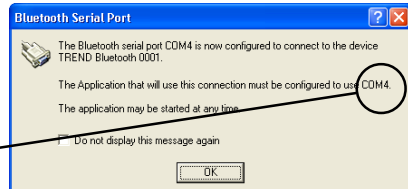
3 Set up Password

- a A dialog box entitled 'Bluetooth PIN Code Request' is displayed.
- b Enter 9999 and click 'OK'
- c The browser now appears with a tick alongside the Bluetooth icon



4 Determine Serial Port Number

- a Double-click the Bluetooth icon. The browser will now display a single icon titled 'Bluetooth Serial Port on TREND Bluetooth xxxx'.
- b Double click the icon and a dialog similar to that shown will appear. Note the port number.

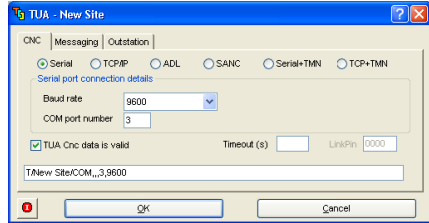


5.1 On Windows XP (continued)

5 Configure Serial Port and Baud Rate

- a Start the Trend software as normal.
- b Set system connection to serial port, with a 9600 baud rate, and the serial port number shown in step 4

Note that SET and other TCC based applications are not currently capable of using ports greater than COM15. If your PC Bluetooth adapter selects a port number greater than this it cannot be used. Refer to the adapter documentation of the supplier to determine how to make it select a port number in the useable range.



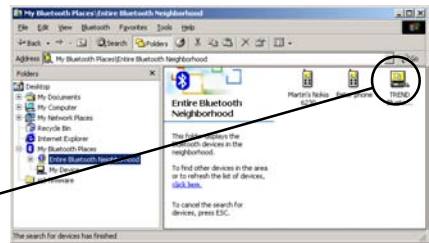
5.2 On Windows 2000

1 Install PC Bluetooth Adaptor

- a Install the PC's Bluetooth adaptor in accordance with its supplier's instructions.
- b Ensure that 'Bluetooth Serial Port' is included in the list of services that the PC will provide.

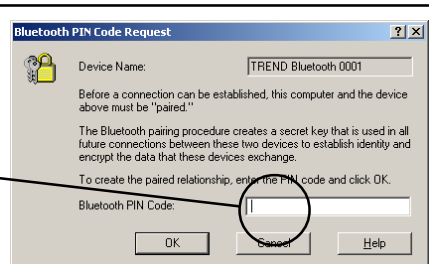
2 Select Trend Bluetooth Supervisor Port Adaptor

- a Browse to 'My Bluetooth Places' and double click on 'Find Bluetooth Devices'.
- b A desktop computer called 'TREND Bluetooth xxxx' will be shown in the browser. Where xxxx matches the 4 digit serial number on the outside of the module.
- c Right-click on 'TREND Bluetooth xxxx' icon and select 'Pair Device'



3 Set up Password

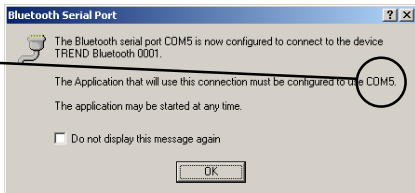
- a A dialog box entitled 'Bluetooth PIN Code Request' is displayed.
- b Enter 9999 and click 'OK'



5.2 On Windows 2000 (continued)

4 Determine Serial Port Number

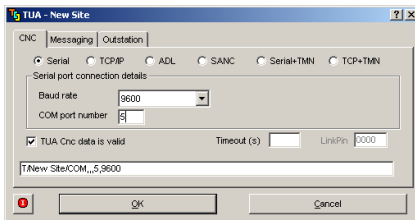
- a The browser now appears with a tick alongside the Bluetooth icon
- b Double-click the Bluetooth icon. The browser will now display a single icon titled 'Bluetooth Serial Port on TREND Bluetooth xxxx'.
- c Double click the icon and a dialog similar to that shown will appear. Note the port number.




5 Configure Serial Port and Baud Rate

- a Start the Trend software as normal.
- b Set system connection to serial port, with a 9600 baud rate, and the serial port number shown in step 4

Note that SET and other TCC based applications are not currently capable of using ports greater than COM15. If your PC Bluetooth adapter selects a port number greater than this it cannot be used. Refer to the adapter documentation of the supplier to determine how to make it select a port number in the useable range.



6 Disposal



WEEE Directive :

At the end of their useful life the packaging and product should be disposed of by a suitable recycling centre.

Do not dispose of with normal household waste.
Do not burn.

7 EC Declaration of Conformity

EC Declaration of Conformity		
EC Directive:	1999/5/EC relating to radio equipment and telecommunications terminal equipment.	
Responsible Person:	Richard Hoptroff	
Company:	FlexiPanel Ltd 2 Marshall Street, 3 rd Floor London W1F 9BB	
Product:	TREND Bluetooth	
Technical File:	TCF LMDT	
Intended Use:	Building automation system maintenance	
<p>I certify that the product described on this declaration and related TCF, complies with the radio spectrum, interface, EMC and safety requirements of the R&TTE directive 1995/5/EC, relating to radio equipment and telecommunications terminal equipment and with UK radio interference requirement 2030 for short range devices.</p>		
Signed	Position	Date
R G Hoptroff	Managing Director	__1__ / __6__ / 2006__

Manufactured for and on behalf of Trend Control Systems Limited by RF Solutions Ltd; designed by Flexipanel Ltd.

Manufactured for and on behalf of the Environmental and Combustion Controls Division of Honeywell Technologies Sàrl, Ecublens, Route du Bois 37, Switzerland by its Authorized Representative.

Trend Control Systems Limited reserves the right to revise this publication from time to time and make changes to the content hereof without obligation to notify any person of such revisions or changes.

Trend Control Systems Limited

P.O. Box 34, Horsham, West Sussex, RH12 2YF, UK. Tel: +44 (0)1403 21888 Fax: +44 (0)1403 241608 www.trend-controls.com

Trend Control Systems USA

6670 185th Avenue NE, Redmond, Washington 98052, USA. Tel: (425)897-3900, Fax: (425)869-8445 www.trend-controls.com